



ROBUSCH[®]



Rotary Lobe Blowers



**Evolving
Technologies**

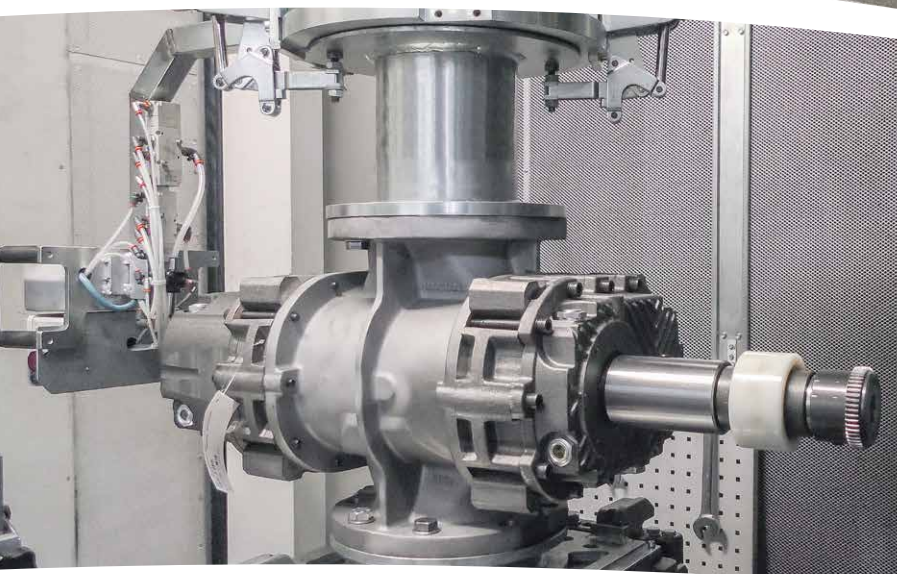


First class Leading manufacturer

Optimal performance

Our commitment to quality

Unmatched Reliability



Experience and expertise

Robuschi has developed pressure and vacuum solutions since 1941 with manufacturing facilities in Parma (Italy).

A world leader in blowers and pumps for different industries, we are committed to playing a vital role by saving energy and protecting the environment.

Our equipment, systems and services are dedicated to helping customers' optimise the performance of their processes.

Using modern machining systems and state-of-the-art production processes, our product range is constantly evolving.

Our Rotary Lobe Blower range has been redeveloped in line with our customers' exacting requirements.

You can count on our PD Blower:

- Carry out the toughest tasks with consistent quality and reliability
- Trust in convenient solutions through our continuous technology innovation
- Get optimal performance, maximum uptime and operating efficiency

We enhance and add value to our customers, taking on challenges, innovating and working together.

Robuschi - the perfect partner for your evolving needs





The perfect fit for every application

Our team of experienced engineers is focused on developing products that offer maximum benefit to each customer. Our wide range of rotary lobe blowers covers most environmental and industrial applications, ensuring the best choice for your needs.

Wastewater treatment

(Industrial and municipal sectors)



Benefits at a glance

- Highly reliable
- Simple configuration
- Operation-friendly and low maintenance
- Wide turndown capability
- Precise capacity fitting
- Robust design
- High durability

Modern wastewater treatment requires the movement of large volumes of air at low pressure and Robuschi's PD blower range provides a reliable source of air for its different processes.

- **Aeration process:** The aeration tanks in wastewater treatment plants are activated with oxygen by using compressed air. Blower technologies can be found in various types of wastewater treatment plants, including aerobic activated sludge systems, SBR, nitrification-denitrification in a single basin and MBR.
- **Primary sedimentation in the oxidation compartment**
- **Back washing sand filtration**
- **Desalinization**
- **Ozonation**

First Class
Limitless Applications
Processed-oriented

Benefits at a glance

- Dry running
- Low temperature process
- Extremely reliable and robust
- Easy to install and maintain
- Wide range
- Cost efficient
- Long uptime and low service costs
- ATEX certification

Industrial sector

(Pressure operation)

Robuschi offer a wide range of PD blowers in pressure operation, which can fit the process requirements of different industries: food and beverage, lime and cement, mines, chemical and pharmaceutical and many other.

- **Pneumatic conveying:** Pneumatic conveying systems are typically used to convey food ingredients (sugar, flour, powders) from a starting position (typically stocking silos) to another (typically buffer silos or process). Thanks to the air flow and the pressure build up in the piping, solid items float and are guided to destination points where they are separated by means of a cyclone separator/filter receiver.
- **Lime cement fluidisation**
- **Combusted gas recovery**
- **FGD (Flue-gas Desulfurisation):** The circulating fluidised bed technique allows the burning of highly sulphurated products while respecting a low emission rate of sulfur and nitrogen oxides in the fireplace.
- **Bed combustion fluidisation:** The fluidisation air of the outlet beds, siphons and ash coolers is supplied by positive displacement blowers.
- **Cooling and drying**
- **Methane gas extraction**
- **Feeding inert**



Industrial sector (Vacuum operation)

Robuschi offers a wide range of rotary lobe blowers for vacuum operation in different configurations, depending on customers' requirements and technical application specifications.

- **Pneumatic conveying**
 - **Food packaging**
 - **Removal of impurities**
 - **Pulp drying**
- **Tissue:** Suction pickup and transfer rolls use vacuum to transfer the paper from the forming section to the press section, and guide the sheet from one felt to another in the press section.

- **Pick & place**
 - **Lifting system**
 - **Industrial cleaning**
 - **Vacuum in glass forming**
 - **Central vacuum systems**
 - **Coating**
 - **Metallisation**
- **Methane gas extraction:** Blowers are used to remove methane gas from underground coal mine basin



Benefits at a glance

- Robust and reliable
- Minimum maintenance
- Vacuum adjustment
- No water consumption
- Environmental friendly without any oil contamination
- Complete package with primary vacuum system available

Aquaculture

Sustainable fish farming and processing requires a comprehensive range of advanced technologies to provide efficiency at every stage of the operation. Robuschi therefore design and manufacture a wide range of rotary lobe blowers with uncompromising quality and reliability to not only meet, but exceed the demands of the application.

- **Fish feeding:**
The fish food distribution is delivered through pressure pneumatic systems from barges or ships to the fish in open water (aquaculture cages)

- **Packaging**
- **Fish pond aeration**
- **Wastewater treatment**

Benefits at a glance

- Premium performance
- Space-saving design
- Resistant and robust
- Long uptime and low service costs
- Robox Aqua series specifically designed for aquaculture applications

Environmental sector

(Heavy-duty applications)

Robuschi can offer PD blowers equipped with special seals and different components in stainless steel (AISI 316 or DUPLEX) to provide excellent corrosion resistance.



- **Mechanical vapor compression & recompression:**

This process uses thermo-compression to extract water as clean condensate from polluted fluids. Because only the heavy residuals require further treatment, a considerable amount of water is recyclable.

- **Solvent recovery**
- **Slurry drying process**

Benefits at a glance

- Different configurations available with various sealing systems
- Excellent resistance to corrosion
- Maintenance friendly

Biogas industry

Robox Lobe Biogas – CRBIO – GRBIO is a specific range, developed especially for the conveying and compression of biogas, as well as natural and landfill gases in power generation plants.

- **Biogas recovery:** This is the process of transferring the biogas from the digester to the endothermic cogenerating engine or from digesters to upgrading stations.



Benefits at a glance

- *Reliable*
- *Safe*
- *Resistant*
- *Full range of accessories*
- *ATEX certification*
- *Customised solutions for different biogas applications*

Mobile application

It is possible to transport different types of material, such as food, waste or liquids for use in other processes. The Robuschi RB-DV vacuum series can reach vacuum levels of up to 93% on a dead head - 28" Hg without the need to water inject and without overheating, thanks to a Robuschi patented atmospheric air injection device.



- **Soil gas extraction**

• **Suction vehicles for wastewater:** The blower provides vacuum for removing and flushing out contaminants in wastewater and for cleaning sewer networks.

- **Truck-Hydroexcavation**
- **Sand oil fields recovery**

Benefits at a glance

- *Gases and vapours can be handled*
- *Patented and unique air inlet design*
- *Cool operating temperatures*
- *Low maintenance thanks to its robustness and heavy-duty operation*
- *Environmental friendly without any oil contamination or water use*



**Evolving
Technologies**

Robox Lobe: New design and frames

Our extensive experience in the low pressure blower market gave us the opportunity to supply generations of customers worldwide with solutions for their operational needs. We are well aware that success is a process based on the will to innovate new products, and on working closely with our customers.

We introduce a new Robox Lobe design and new frames. Our Engineering team performed a complete package redesign, keeping the same new noise enclosure concept from both lobe and screw blower ranges. Depending on your requirements, this new unique design.

You can call it thinking outside the box to create our best Robox yet.

New Robox Lobe for a Superior Package!

Unique Design

Thanks to its exclusive features Robox Lobe has compact dimensions with the possibility of side-by-side installation. They are extremely easy to be installed with no requirement for ducting, so the compressor rooms can be kept to the minimum size.

One Package Two Technologies (Frames 3.0, 3.5, 4.0, 5.0)

Take advantages of the one solution for both lobe and screw blower technologies. Whether revamping plants, or your processes, you can review and compare each technology's benefits for your operation before you commit to buy. Either way you choose, the New Robox Lobe and Screw will fit your requirements.

Low Noise

Low noise emissions are ensured by our new discharge and suction silencer design. In addition, cabin enhancements grant noise reduction thanks to the special sound proofing material, upgraded panel thickness and enclosure air inlet and outlet ducts muzzled with a lined single-chamber plenum and lined bends.

Easy Installation

Save time and money thanks to the easy and flexible installation of the new Robox Lobe blower. Handle the Robox with ease utilizing the rigid base's dedicated channels for forklifts, and place it on any even surface, with no need for special foundations.

Small Footprint for Minimal Space Requirements

We introduce two new additional frames — 1.0 and 1.5 — which mark the smallest options within our lobe blower range. The distinctive configuration of the Robox lobe package minimizes its footprint while concurrently preserving and enhancing performance. Depending on the lobe blower dimensions, we've managed to reduce the overall footprint by an impressive 20%.

Accessible Service and Maintenance

The design of this New Robox package ensures that the service points are easily accessible. To help you see inside, the enclosure side doors are hinged and removable. In addition, oil level can be checked while the Robox is running from the outside.



Top components

Robox is an integrated package designed to convey gas at low pressure. It is based on the RBS lobe positive displacement rotary lobe blower, operated by an electric motor through belt drive, including all accessories and noise enclosure.

Robox Lobe can be supplied in pressure (up to 1,000 mbar(g)) and in vacuum operation (up to 500 mbar(a) with RBS and up to 100 mbar(a) with RB-DV air injection rotary lobe blower).

Globally, the Robox Lobe package means reliability, extreme sturdiness and compactness. We have taken this to a new level by improving the layout, reducing maintenance costs and increasing flexibility, to better meet the different plant requirements.

Smart oil system

- One oil level (all models, only frame 1 excluded) to check from outside
- Better reading reliability
- Easier oil filling operation
- Lower oil top-up times with lower maintenance costs



New performance cooling fan

- Better air circulation inside the noise enclosure
- Extended operating range capacity
- Greater reliability
- Easy connection by means of terminal board
- Better efficiency due to inner enclosure's lower temperature

RBS Air-end HT Version

(High temperature)

- Pirex mirrors for better visibility of oil level
- Steel cage bearings for heavy duty (standard in all versions)
- Greater reliability
- Increased operating temperature for a wider range
- Lower maintenance costs thanks to bearing extended life

Pressure up to 1,000 mbar(g)
vacuum up to 500 mbar(g)
Capacity up to 10,500 m³/h

Discharge silencer optimisation

New silencer design with reduced vibrations for increased energy efficiency.

Enhanced noise enclosure

- Redesigned noise enclosure featuring a fully enclosed base and optimized heat flow design.
- Engineered for superior performance, this enclosure provides enhanced noise reduction, significantly lowering sound levels for a quieter, more efficient environment.

Smart and compact design

Robox Lobe machines can be placed side by side, thereby significantly reducing the space they require and therefore the dimensions of the blower room, thus also decreasing system costs.





Keys to success

Easy maintenance

Robox Lobe allows maintenance operations to be carried out in an even easier and effortless manner:

- Simplified access: all maintenance operations are easily performed from the front with the removal of the front panel or for bigger frames with the removal of side panels
For frames 1.0 and 1.5 the all the maintenance tasks, such as oil change, belt replacement, and air filter installation, can be effortlessly carried out by simply opening the rooftop and removing the front panel
Additionally, air end overhaul and motor repositioning are conveniently achieved through unrestricted top and front access
- Instant oil level check: the oil level can be checked externally with the blower running, by means of level positioned on the front panel of the enclosure
- Easy oil change: an oil change can be performed directly from the front panel with easily accessible fill and drain hoses
- Automatic belt tensioning: an oscillating suspension system of the motor maintains the correct belt tension at all times, thereby reducing the load on the bearings
- Simple belt replacement: this is carried out from the front without the use of any additional equipment thanks to the automatic tensioning device





ROBOX 
CONNECT

Peace of mind

The Robox Lobe package is ready to accept the new Robox Connect controller, which allows:

- Better machine operation monitoring
- Improved visualisation of main operating parameters
- To monitor and configure each measured parameter and alarm from any display using a remote connection via Ethernet.
- Data logger function for service trouble-shooting
- Alarms management
- Tracking maintenance schedule

Quiet operation

The Robuschi blower package offers smooth operation by utilising cutting edge technology with a combination of innovative components:

- Robuschi RBS blower: equipped with a special device to reduce the flow pulsation
- SPF inlet silencer: consisting of a patented interference device to eliminate the sound pressure generated at the inlet and adjustable according to the blower speed
- Discharge silencer: consisting of a resonance chamber, no internal sound absorbing materials
- Noise enclosure: intake air conveyance optimisation and restyled noise enclosure deliver minimal noise levels

Energy savings

Robox Lobe packages are equipped with IE3 drive motors and premium efficiency (IE4) from 75 to 200 kW. Star/Delta and Soft starters are also available.

- Inverter duty motors for variable frequency driver (VFD) for wide turndown capability
- Better efficiency belts with additional noise reduction

Special solutions for every application

Robuschi is constantly researching and developing new equipment and technical features for customised packages that will match our customer specific requirements. Our engineers support our customers to provide tailored options.

CRBS - GRBS

Complete rotary lobe blower packages, which can be fitted with a special belt drive (GRBS) or directly coupled by means of coupling joint with or without reduction gear (CRBS).

CRBS - GRBS packages can be supplied for capacities up to 25,000 m³/h and for power up to 600 kW.

- Customised with many options available
- Robust and reliable
- ATEX certification available



Pressure up to 1,000 mbar(g)
Vacuum up to 500 mbar(g)
Capacity up to 25,000 m³/h

Robox Direct

Robox Direct is a compact rotary lobe blower package, that can be quickly and easily integrated into your existing compressor room, while also being suitable for upgraded plants.

In addition, the technology uses a direct-driven motor without gears or belts, which maximizes efficiency and regulates the flow according to the application and its demands. Regulated speed also ensures that no energy is wasted.

- Improved efficiency by 8%
- Modular design
- Direct coupling
- Reduced noise levels
- Small footprint
- Ease of access



Pressure up to 1,000 mbar(g)
Capacity up to 700 m³/h
Motor Power up to 30 kW

Robox Bio&Gas

Robox Bio&Gas is especially developed for the conveying and compression of biogas, as well as natural and landfill gases, and special gases in wastewater, power generation and industrial applications.

- Reliable
- Safe
- Resistant
- Full range of accessories
- ATEX certification - group II in category 2
- Customised solutions for different biogas applications

Pressure up to 1,000 mbar(g)
vacuum up to 500 mbar(g)
Capacity up to 2,850 m³/h



CRBIO - GRBIO

Blower package group, assembled on a skid and available with belt transmission or directly coupled. The CRBIO - GRBIO packages are certified according to the most important and recent EC guideline 94/9/EC (ATEX) - group II in category 2, in order to guarantee the best safety usage in this range of application.

Pressure up to 400 mbar(g)
vacuum up to 500 mbar(g)
Capacity up to 2,850 m³/h



RBS Family



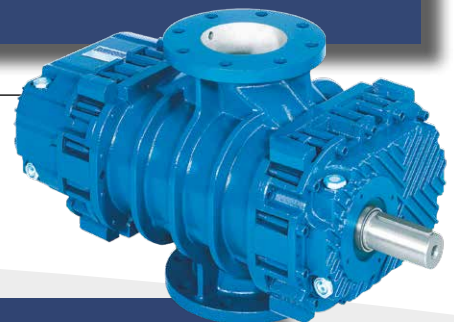
Benefits at a glance

- *Splash-lubricated helical tooth synchronized gears for optimum rotor timing*
- *High quality lobe profile rotors controlled by three-dimensional instruments for top volumetric efficiency*
- *Durable shafts and robust design to reliable operation. Special coating (on request)*
- *Long life steel cage bearings*
- *Pirex mirrors for clear oil inspection*
- *Special seals for severe duty applications (on request)*

RBS - The heart of the Rotary Lobe Blower package

RBS is the innovative positive displacement rotary blower with 3 special profile lobes that, combined with a new configuration of the LOW-PULSE system, reduces the residual pressure pulsation of the conveyed gas below 2% of the operating pressure.

RBS in ATEX version, available on request



Pressure up to 1,000 mbar(g)
vacuum up to 500 mbar(g)
Capacity up to 25,000 m³/h

RBS-Steam - Rotary Lobe Blowers in Stainless Steel



*Pressure up to 1,000 mbar(g)
vacuum up to 500 mbar(g)
Capacity up to 14,000 m³/h*

Made with all components in contact with the conveyed fluid in stainless steel (AISI 316 or DUPLEX), these blowers are resistant to corrosion and therefore suitable for use in heavy-duty applications such as evaporation processes and in the field of wastewater treatment. Different configurations are available with various sealing systems such as lip and mechanical seal, and combinations of materials (stainless steel and cast iron), which allows the customer to select the most suitable solution, depending on the chemical composition and the type of system. For easier maintenance, the special sides on the PRV version allow immediate access to the sealing system.

RB-DV - Air Injection Vacuum Rotary Lobe Blowers

The RB-DV series consists of 3 lobe rotary blowers used as exhausters which makes it possible to reach a high compression ratio by means of a patented atmospheric air injection device that reduces overheating of the gas and the power absorbed by the blower.

The main characteristics of these blowers are as follows:

- Maximum vacuum 93% - 28" Hg on a dead head
- Gases and vapours can be handled
- No sliding parts, therefore no wear
- Safe operation and minimum maintenance
- No oil mist
- RB-DV in the ATEX version available on request



*vacuum up to 930 mbar(g)
Capacity from 840 to 10,500 m³/h*

RBS-AV - Vacuum Booster Rotary Lobe Blowers

*vacuum from 0.001 to 20 mbar(a)
Capacity from 300 to 9,400 m³/h*



The RBS-AV series are rotary lobe blowers used to increase the capacity of the primary vacuum pumps when operating at their minimum suction pressure (as a booster).

The main characteristics of these blowers are as follows:

- Gases and vapors can be handled
- No sliding parts, therefore no wear
- Safe operation and minimum maintenance
- RBS/AV in the ATEX version available on request

Options and accessories

The wide range of options and accessories available for the Robox Lobe package means units can be configured to meet the customer's exacting requirements.

- Control panel
- Electronic instrument kit (pressure/temperature transmitters at suction and discharge side)
- Relief and starting valve
- Electric power cabinet: Star/delta, soft starter, frequency converter VFD
- ATEX certification available for ATEX 2 ZONE 1 /21 and ATEX 3 ZONE 2/22.

Robox Lobe package Plug&Play version



It is possible to select different Robox Blower package configurations, according to customers' requirements.

The unit can be equipped with a main power electric cabinet:

- Star/delta starter
- Soft starter
- Premium frequency converter for maximum performance and reliability
 - Electrical cabinet with IP54 protection degree and a forced cooling system
 - Modular installation close to Robox unit or in an other location via wired connection for maximum flexibility
- Programmed control panel for process optimization and regulation
- Industry 4.0 solution with data transmission through the most popular communication protocols (Modbus, Profibus-Profinet, Canopen)
- Preset frequency converter on delivery for peace of mind
- Additional system for continuous monitoring of main parameters (*optional*)

Additional silencers

(*optional*)

SDL - SCE

Absorption silencers are fitted in particular sections of the system's pipework connected to the Robox unit, to further reduce the noise levels generated.



Vacuum silencer kit



A specific kit for Robox packages in vacuum operation, consisting of SDL absorption silencers and SPS exhaust silencers. This reduces the sound level generated by the exhaust outlet by approximately 25 dB(A) within the frequency field ranging from 200 Hz to 20 kHz.

ROBOX

CONNECT

Robox Connect controller *(optional)*

The new touch screen controller is very user friendly with an intuitive menu. It provides you with a real-time view of the Robox Lobe's operation, and allows you to continuously monitor the device. This ensures you spot problems and malfunctions before they happen thereby protecting your investment. The controller manages a variety of operating functions available from the built-in screen, as well as remotely. You can monitor and configure each measured parameter and alarm from any display using a remote connection.

Main Robox Connect Controller Functions

- Multiple language configuration
- 44 analog and digital inputs / outputs
- Sequencing mode (multi-blower control)
- Interval maintenance with a dedicated P&I chart
- Parameter data transmission via Field Bus
- Parameter trends
- Alarms detections
- Data logger for service troubleshooting
- Suitable for any kind of starter device

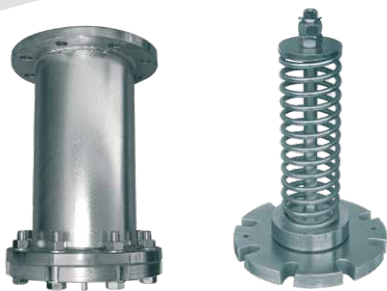


What Are The Controlled Parameters?

- Suction pressure (P1)
- Discharge pressure (P2)
- Noise enclosure temperature (T1)
- Discharge temperature (T2)
- Oil sump temperature driven side/oil injection temperature (T3)
- Oil sump temperature gears side/tank oil temperature (T4)
- Airend shaft speed indicator
- Oil level gear/driven side *(optional)* (L3 - L4)
- Main motor PTC
- Emergency stop kit *(optional)*



The new Controller is compatible with iConn, the Industry 4.0 solution.



Relief valves

RVP - RVV *(standard)*

RVP: Direct relief valve for pressure operation.

RVV: Direct relief valve for vacuum operation.

Relief and starting valve

VSM *(optional)*

This valve allows starting of the group with a low absorbed power when the blower is started with a static back pressure (e.g. in wastewater treatment plants). The starting time is adjusted by means of a special screw.

The VSM valve is also equipped with a special PSM pilot valve fitted on the lid, which also makes it work as a relief valve in pressure, with a maximum over pressure 5% lower than the setting pressure.



Rotary Lobe Blower Performance

Robox Lobe Performance

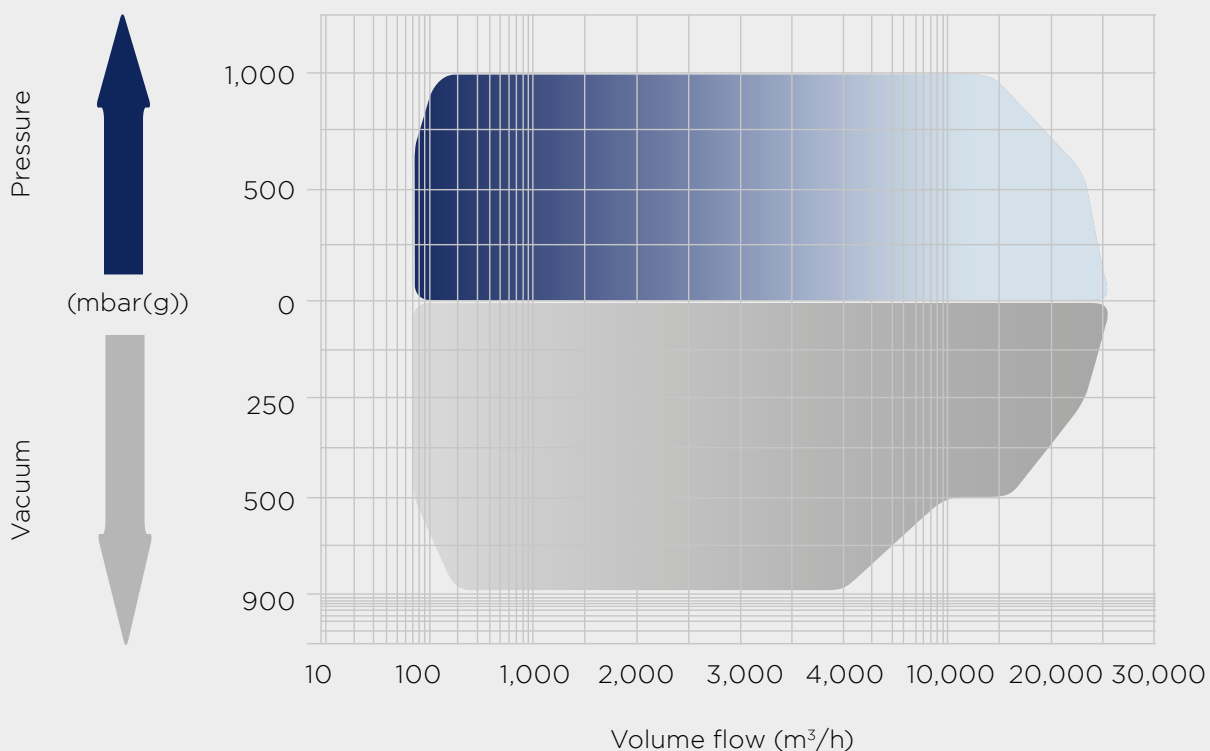
ROBOX		OPERATION							
		MAX PRESSURE DATA				MAX VACUUM DATA			
ROBOX dimension	Blower dimension	Pressure	Capacity	Motor	Noise	Vacuum	Capacity	Motor	Noise
		mbar(g)	m ³ /h	kW	dB (A)	mbar(g)	m ³ /h	kW	dB (A)
1.0	ES 15	750	270	5.5	N/A	500	270	5.5	N/A
	ES 15	900	270	11	N/A	-	-		-
1.5	ES 25	700	340		15	N/A	450	340	7.5
	ES 35	1000	530	N/A		500	530	15	N/A
2	ES 35	1000	530	22	73	-	-	-	-
	ES 45	1000	750	30	76	500	690	18.5	73
	ES 46	700	1125		75	500	1050	30	72
	ES 55	1000	1070	45	76	500	1010		73
	ES 65	1000	1145		77	500	1350	45	74
3.0	ES 65	1000	1370	55	77	-	-	45	-
	ES 66	700	1950		77	500	1850		73
	ES 75	1000	1600	75	76	500	1590	76	
	ES 85	1000	2500	90	77	500	2330	55	74
	ES 86	700	2450	75	77	500	3000	75	78
3.5	ES 95	1000	2590	90	77	500	2590	75	75
	ES 86	700	3250	90	77	-	-	-	-
	ES 105	1000	3600	132	78	500	3650	75	76
	ES 106	700	4900		78	450	4945	90	78
ES 115	1000	4290	160	77	500	4300	90		76
4.0	ES 125	1000	5500	200	78	500	5580	110	78
	ES 126	700	5620	200	78	450	7880	132	77
	ES 135	1000	5900	200	78	500	6500		76
5.0	ES 126	700	7360	250	81	-	-	-	-
	ES 145	1000	8000	315	84	500	8000	200	84
	ES 155	700	10300	315	83	500	10200	200	85

CRBS - GRBS Performance

GRBS-CRBS	OPERATION							
	MAX PRESSURE DATA				MAX VACUUM DATA			
	Pressure	Capacity	Motor	Noise	Vacuum	Capacity	Motor	Noise
Blower size	mbar(g)	m ³ /h	kW	dB (A)	mbar(g)	m ³ /h	kW	dB (A)
165	1000	10420	400	84	500	10430	250	84
175	1000	14420	550	85	500	14430	315	85
205	1000	16430	600	84	500	16440	355	84
225	700	24870	650	84	450	24580	450	84

Performance related to atmospheric air: absolute pressure 1,013 mbar, temperature 20°C, relative humidity 50%, specific weight 1.2 kg/m³

RBS Air Map





Maximum uptime. Extending performance.

We provide a range of services to ensure our customers' machines are well maintained to deliver maximum performance.

We offer preventative and planned maintenance programs, genuine parts, on-site service, professional maintenance and efficient training.

Within our service portfolio, you will find many and varied options and services needed to get optimal performance, maximum uptime and operating efficiency from your Robuschi equipment.



Find your Genuine Parts at



**GENUINE
PARTS**

Scan the QR code

GARDNER DENVER S.r.l. Divisione ROBUSCHI Manufacturing facilities

Via S. Leonardo, 71/A
43122 Parma - Italy

GARDNER DENVER NEDERLAND B.V.

Barwoutswaarder 3
3449 Woerden
Netherlands

GARDNER DENVER Ltd. United Kingdom

Claybrook Drive,
Washford Industrial Estate
Redditch, B98 ODS
UK

INGERSOLL RAND Schweiz AG

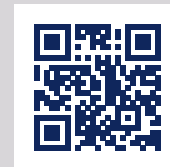
Langfeldstrasse 90
CH - 8500 Frauenfeld
Switzerland

GARDNER DENVER Schopfheim GmbH

Johann-Sutter-Straße 6+8
79650 -Schopfheim
Germany

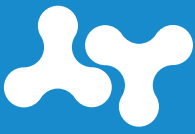
GARDNER DENVER S.A.S. Division produits industriels

70 avenue Albert Einstein
Zone du Château d'Eau
B.P. 50061 - F-77551
Moissy Cramayel Cedex
France



www.robuschi.com

ROBUSCH®



ROBOX LOBE BLOWER

NEW FRAMES 1.0 AND 1.5



CUTTING-EDGE DESIGN WITH LESS FOOTPRINT UP TO 20%

Our Rotary Lobe Blower range has been redeveloped in line with our customers' exacting requirements.

You can count on our rotary lobe blower range:

- Carry out the toughest tasks with consistent quality and reliability
- Trust in convenient solutions through our continuous technology innovation
- Get optimal performance, maximum uptime and operating efficiency

We have recently unveiled a new design for the Robox Lobe, introducing two new frames—1.0 and 1.5—which mark the smallest options within our lobe blower range working in pressure (maximum pressure up to 1,000 mbar(g) and capacity up to 530 m³/h) or in vacuum (maximum vacuum up to 450 mbar(a) and capacity up to 530 m³/h).

We enhance and add value to our customers, taking on challenges, innovating and working together.



Evolving
Technologies

SMALL FOOTPRINT FOR MINIMAL SPACE REQUIREMENTS

Our considerable expertise in the low-pressure blower market has allowed us to provide generations of customers across the globe with tailored solutions to meet their operational requirements. We recognize that achieving success involves consistently

innovating new products and maintaining close collaboration with our valued customers. We have redesigned our smaller-sized lobe blower to enhance compactness while ensuring sustained performance.

KEY FEATURES FOR PREMIUM PACKAGE

EFFICIENCY AND PERFORMANCE



We assure efficiency and performance through the renowned RBS, a three-lobe blower equipped with the LOW-PULSE system and high-quality components, including the base frame, silencers, and noise enclosure.

REDUCED NOISE AND VIBRATION



The noise level has been minimized, thanks to the new developed base frame and new suction silencer with minimized pressure losses (diffusion and resonance sections without sound absorbing material), anti-vibration pads, the air inlet silencer (SPF) featuring an air inlet filter element (class G4) and noise enclosure panels with additional sound-absorbing material.

COMPACT DESIGN



We have successfully overhauled the Robox Lobe package, introducing compact and space-efficient designs. The distinctive configuration of the Robox Lobe package minimizes its footprint while concurrently preserving and enhancing performance. Depending on the lobe blower dimensions, we've managed to reduce the overall footprint by an impressive 20%.

EASE OF MAINTENANCE



The redesigned package incorporates features for enhanced maintenance ease and serviceability. This includes swift access to critical components, user-friendly interfaces, and innovative solutions aimed at minimizing downtime.

Maintenance tasks, such as oil change, belt replacement, and air filter installation, can be effortlessly carried out by simply opening the rooftop and removing the front panel. Additionally, air end overhaul and motor repositioning are conveniently achieved through unrestricted top and front access.



GENUINE PARTS



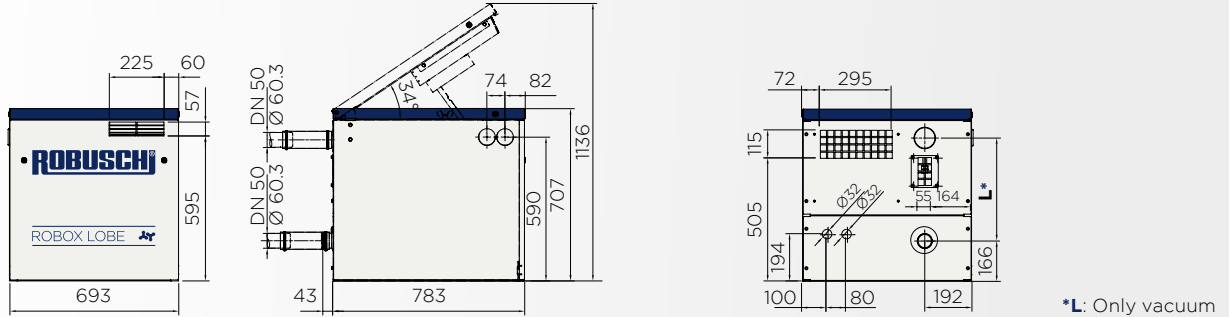
Technical Data

Robox Lobe

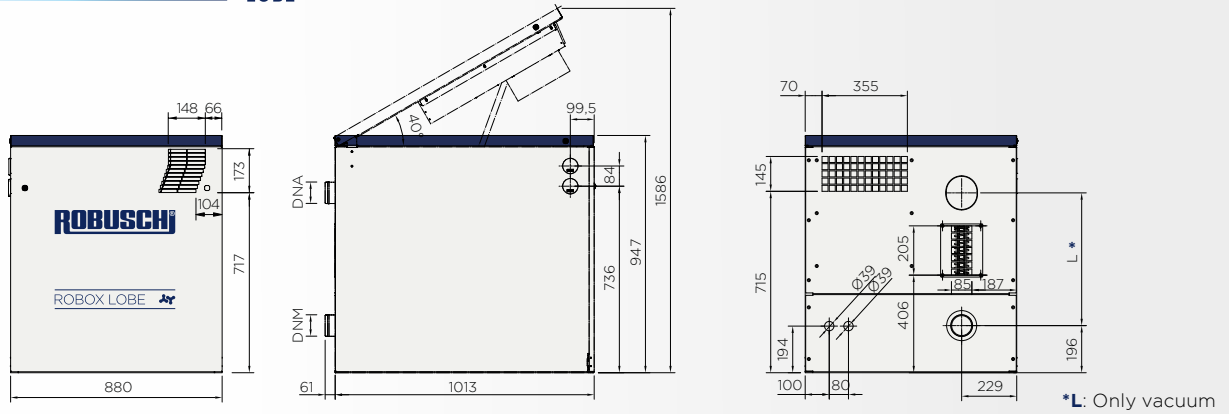
DIMENSIONS

Dimensions and Weights

1.0 NEW SIZE ROBUX LOBE



1.5 NEW SIZE ROBUX LOBE



ROBUX LOBE		Weight without motor EL	Weight without motor ES	DNM/DNA	L*	Version
Frame	Airend Size	kg	kg			
1.0	RBS 15	80	120	50	413	Vacuum
	RBS 15	125	205	50	423	Closed circuit
1.5	RBS 15	125	205	65	457	Closed circuit
	RBS 25	130	210	65	442	Vacuum
	RBS 25	130	210	65	457	Closed circuit
	RBS 35	175	255	80	538	Vacuum
				80	553	Closed circuit

* Only vacuum

PERFORMANCE

ROBUX LOBE		OPERATION					
		MAXIMUM DATA OPERATING in PRESSURE			MAXIMUM DATA OPERATING in VACUUM		
Frame	Blower dimension	Pressure	Capacity	Motor	Vacuum	Capacity	Motor
		mbar(g)	m ³ /h	kW	mbar(a)	m ³ /h	kW
1.0	ES 15	750	270	5,5	500	270	5,5
1.5	ES 15	900	270	11	-	-	-
	ES 25	700	340		450	340	7,5
	ES 35	1000	530	15	500	530	15



An Ingersoll Rand Business

Maximum uptime. Extending performance.

We provide a range of services to ensure our customers' machines are well maintained to deliver maximum performance.

We offer preventative and planned maintenance programs, genuine parts, on-site service, professional maintenance and efficient training.

Within our service portfolio, you will find many and varied options and services needed to get optimal performance, maximum uptime and operating efficiency from your Robuschi equipment.

Find your Genuine Parts at

GENUINE PARTS



Scan the QR code

GARDNER DENVER S.r.l. Divisione ROBUSCHI Manufacturing facilities

Via S. Leonardo, 71/A
43122 Parma - Italy

GARDNER DENVER NEDERLAND B.V.

Barwoutswaarder 3
3449 Woerden
Netherlands

GARDNER DENVER Ltd. United Kingdom

Claybrook Drive,
Washford Industrial Estate
Redditch, B98 0DS
UK

INGERSOLL RAND Schweiz AG

Langfeldstrasse 90
CH - 8500 Frauenfeld
Switzerland

GARDNER DENVER Schopfheim GmbH

Johann-Sutter-Straße 6+8
79650 -Schopfheim
Germany

GARDNER DENVER S.A.S. Division produits industriels

70 avenue Albert Einstein
Zone du Château d'Eau
B.P. 50061 - F-77551
Moissy Cramayel Cedex
France



www.robuschi.com



CONTACT US



FOLLOW US